

Guide to Install iChen Server 4.0 as a Service

1 Open Command Prompt (Run as Administrator)



2 Run the following command to reserve the HTTP web port for all users in the ACL

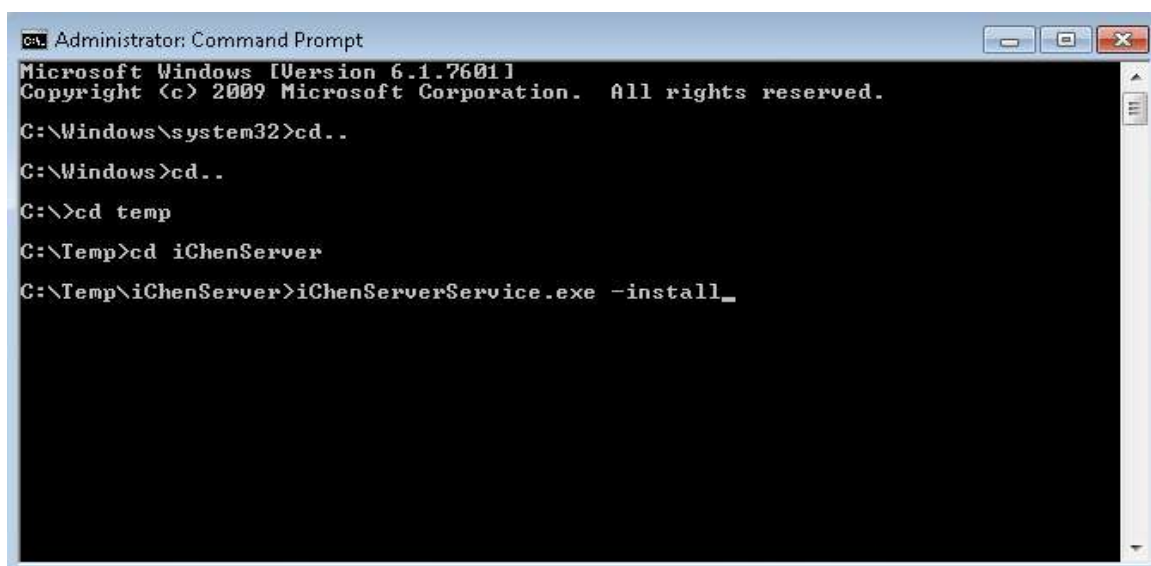
```
netsh http add urlacl url="http://*:5757/" user=Everyone
```

NOTE: You must do this **before** the web interface can be accessed over the network. Otherwise, you can only access the web interface through **localhost**

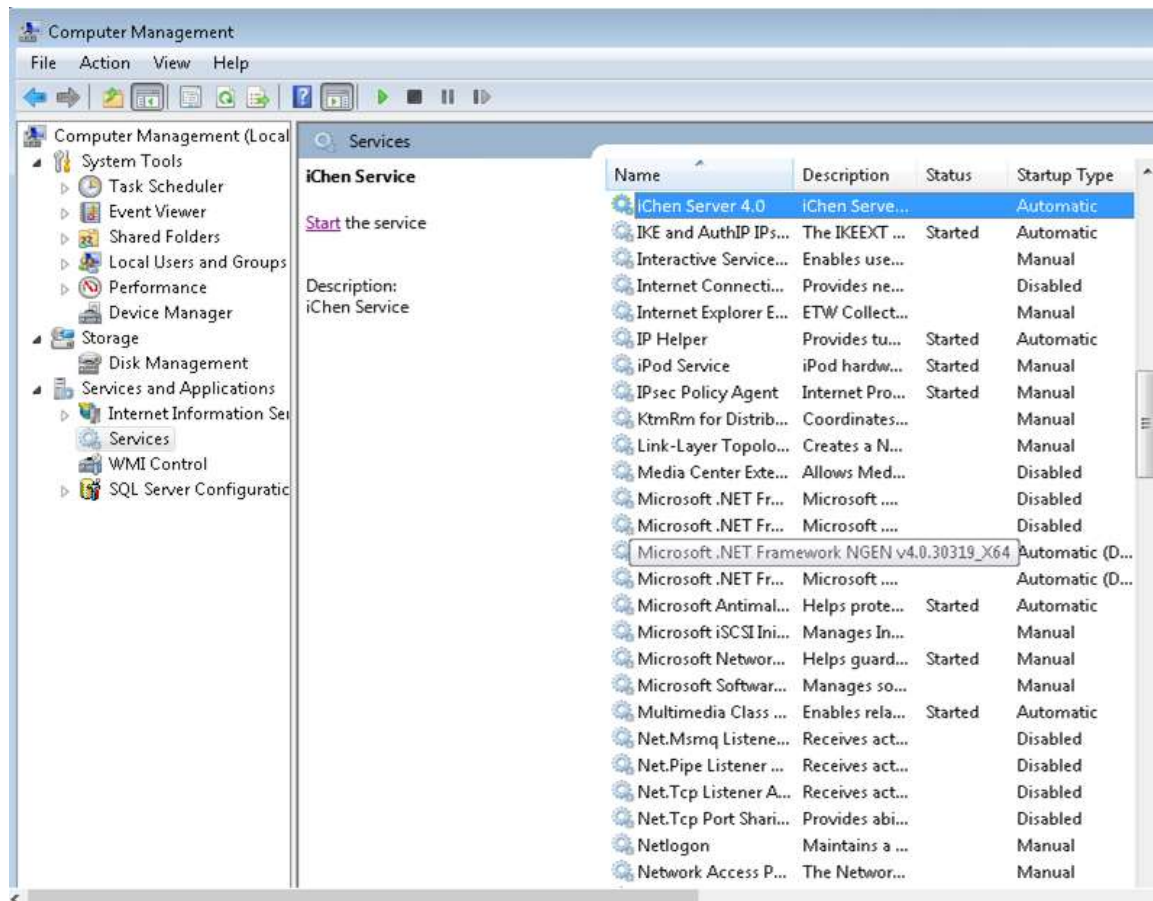
3 Move to the iChen Server Program Folder

Example: `CD "C:\Program Files\iChen 4.0\"`

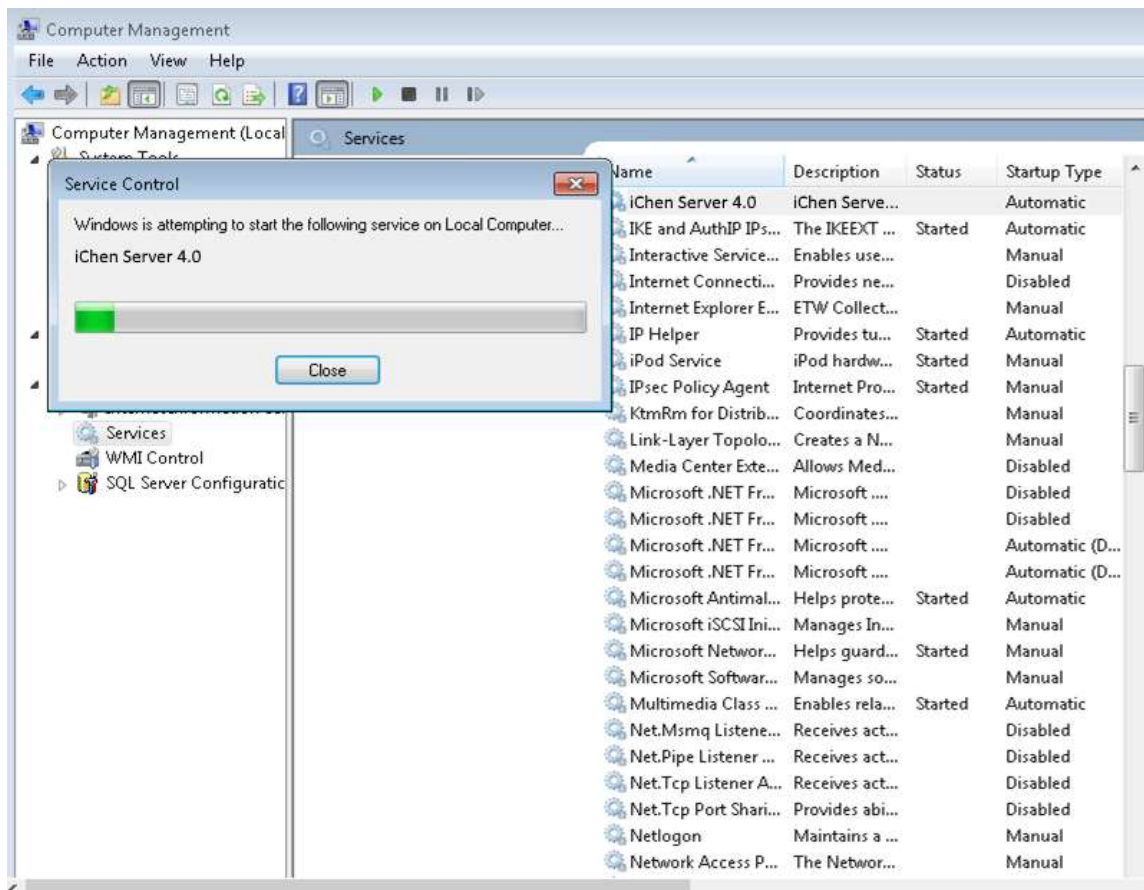
4 Run "iChenServerService.exe -install" to install the service



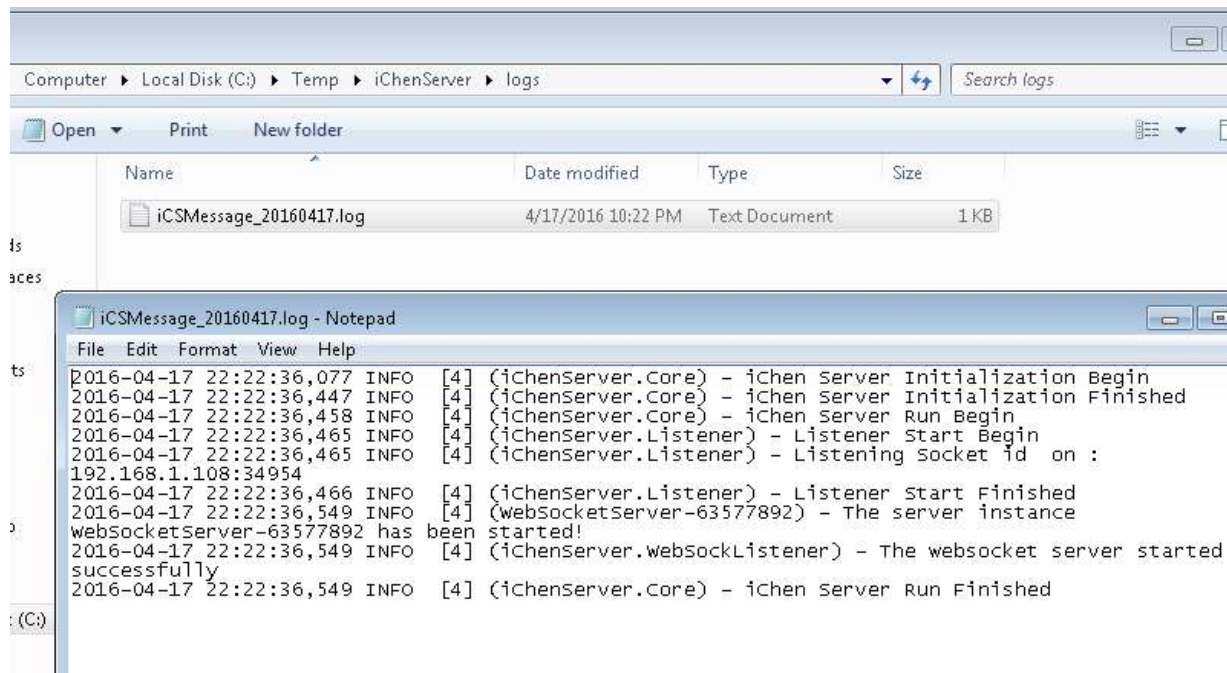
5 Open Services. You should find "iChen Server 4.0".



6 Click Start to start up the service or restart the computer



7 A "logs" folder will be created under the iChen Server program folder



NOTE: For testing, you can run **iChenConsole.exe** as a console application, which displays log messages on-screen for easier diagnosis. Before running **iChenConsole.exe**, you must first **STOP** the "iChen Server 4.0" service as both cannot run at the same time.

8 Allow "iChenServerService.exe" and "iChenConsole.exe" through the firewall, at least for the following ports

- 34954:** TCP port for controllers to connect to the iChen Server 4.0
- 5757:** Web interface (HTTP)
- 5788:** Open Protocol connection port (WebSocket)

If using OPC UA:

- 5789:** OPC UA TCP connection port (opc.tcp://)
- 5790:** OPC UA HTTP/WS connection port (http://)
- 5791:** OPC UA HTTPS connection port (https://)

9 Open the web interface with a browser through the port 5757



Admin user name: **admin**

Password: **chenhsong**

NOTE: It is recommended that you change the password for the admin user immediately upon first login. You can manage the credentials of other users (except **admin**) and add/remove users through the web interface. The **admin** user cannot be modified.

10 Schedule backup tasks for the database.

The central database resides in the file **iChenServerDB.sdf** under the folder **Database**.

The database holds all the critical data necessary for the operation of the iChen Server, especially:

- o Machines and Controllers Information
- o Users Information
- o Saved Moulds Data Sets

It is important that a backup of the database file be taken on a periodical basis via any popular means.